

# Global 8

Torque  
Controller  
System



**Single-controller  
integration for  
your manual and  
air-powered  
torque tools!**



**Sturtevant  
Richmont®**  
Torque Measurement Systems

The Global 8 provides cost effective integration of pneumatic torque tools and S/R torque wrenches, both digital and clicker type.

The Global 8 eliminates the need for separate controllers for your air tools through the use of the PST 1000 Pressure Sensor/Transceiver. This unique new attachment for ported automatic shutoff tools monitors each use and provides instant "OK/Bad" attribute analysis for each!

The 1100 Series **Exacta® 2** Digital Torque Wrenches are made specifically to work with S/R brand controllers. With +/- 1% I.V. accuracy and provision of both variable and attribute data, your most critical joints can now have 100% conformance analysis!

Our SLTC-FM wireless preset clicker wrenches provide the efficiency of a click wrench, the versatility of the S/R Interchangeable Head system, and the immediate operator feedback to know the tool was used properly. When used with the Global 8, the power of these flexible tools is compounded!

# Why Global?



The Global 8 has been designed and manufactured to work anywhere. It meets the requirements for use in virtually every country, and is CE and RoHS-compliant.

Beyond that, it works with almost the entire gamut of common torque tools. Ported air tools, whether clutch or pulse, can be used with it by equipping them with the PST 1000 Pressure Sensor/Transceiver. With the addition of S/R wireless preset clicker-type wrenches and the Exacta® digital torque wrenches, virtually the entire globe of tools is available.

The common 24 VDC control system used in almost every assembly plant is accommodated. The 24 VDC port provides the ability to change specification sequencing "on the fly", and the internal relays update your system as each tool is used.

The large and readily understood display informs the operator of what joint should be worked on, how many fasteners are in the batch, how many have been tightened so far, and the quality of each tightening - immediately upon completion of each fastener.

Wherever your facilities are located, whatever product you assemble, whatever common torque tool type you prefer, the Global 8 can help error-proof your torque application!

## Global 8

Whether it is assembly, auditing or repair bay operation, the Global 8 can help reduce torque errors, and the inevitable costs associated with them.

- Operates up to eight ported air tools, preset clicker torque wrenches or digital torque wrenches - in any combination.
- Front panel programming is extremely easy; setup of tool and specifications for any joint takes less than three minutes!
- Highly reliable wireless tool communications, up to fifty feet (50', 16m), across any of 12 channels.
- Large backlit display shows:
  - Name of joint
  - Tool type to be used
  - Number of fasteners in batch
  - Number of fasteners completed in batch
  - Number of completed batches
- Three large LED's augment the display with notification of completed conforming tightenings, rejected tightenings, and batch completion.
- Beeper with adjustable volume provides additional operator status notification.
- Tightening operations can be sequenced on board, or controlled through I/O system.
- USB port permits rapid specification changes when the needed additional specifications are stored on a computer.
- Automatic voltage sensing allows use with 100 VAC - 240 VAC power.
- Tool use sequencing can be stored on the Global 8, or driven through PLC's using the 24VDC I/O port, or both.
- CE approved and RoHS-compliant, uses radio frequency communications approved for most countries.
- "Suspend" function permits calibration or checking of tools without counting cycles towards completion of assemblies.

***The Global 8  
is available  
now!***



**Global 8 Torque Controller System**

[www.srtorque.com](http://www.srtorque.com)

**Sturtevant Richmond**





## PST 1000 Pressure Sensor/ Transceiver

The innovative PST 1000 monitors your air tool performance, evaluates it against specifications stored on board, and provides immediate feedback to the operator and the Global 8. Your air tools and your hand tools can be integrated without a second controller or additional burden on your control system!

- Works with ported automatic shutoff pneumatic tools, including clutch and pulse types.
- Works with Global 8 to convert a known "good" tightening into specifications, then compares subsequent tightenings of that joint to the specifications.
- Provides immediate feedback to the operator on the "OK/BAD" attribute status of each use of the tool.
- Provides immediate radio communication of the status and data to the Global 8 for display, tracking and I/O use.
- CE and RoHS compliant.
- Rechargeable 2500 mA Lithium-ion battery for extended periods between chargings.
- Battery can be recharged 500+ times.
- Data from each tightening can be graphed and displayed on the Global 8.

*The PST 1000 is available now!*

## 1100-Series Exacta® 2 Digital Torque Wrenches

This new series in the Exacta® family of tools expands their already significant capabilities.

- Bi-directional +/- 1% Indicated Value Accuracy from 20% to 100% of capacity, both CW and CCW.
- Yellow/Green/Red color scheme informs operator of tightening status - regardless of tool orientation!
  - Yellow - the torque specification is being approached
  - Green - The current torque is in specification
  - Red - The maximum torque specification has been exceeded
- "OK/BAD" attribute notification, along with variable data on actual torque and unit of measure on display.
- Wireless bi-directional communication with Global 8 controller; downloads specifications, uploads results.
- English and SI units of measure.
- Tools of 150 ft.lb. capacity and below use S/R Interchangeable Heads (1 7/16" Common Centerline).
- Uses four (4) AA rechargeable batteries, thousands of cycles between battery charges.
- Includes plastic storage/carrying case.



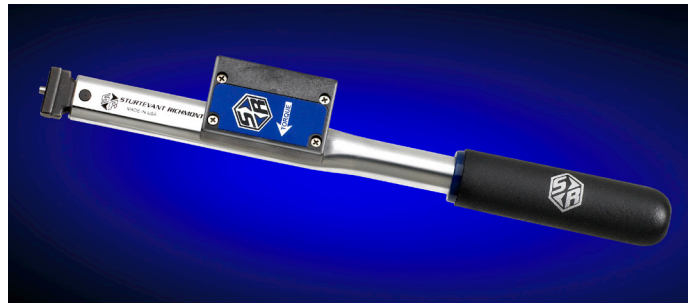
*1100-Series Exacta® 2  
Digital Torque Wrenches  
available late March, 2009*



## Wireless Clicker-Type Preset Torque Wrenches

The SLTC-FM family of tools is based on the proven S/R lineup of preset torque wrenches. These solid performers are the backbone of error-proof torque application for many leading manufacturers!

- Accuracy of +/- 4% of preset value from 20% to 100% of capacity.
- Extremely strong and durable S/R dovetail system works with any of over 100 S/R Interchangeable Heads.
- Monitors time in the "clicked" position to provide an "OK/Bad" tool use evaluation for every fastener it is used on.
  - Too little time in clicked position = tool was "jerked" (Bad, torque likely out of specification high or low)
  - Correct time in clicked position = tool was used properly (OK, torque to specified preset value)
  - Too much time in clicked position = tool was pulled past the click (Bad, torque over specification)
- Provides immediate on-tool feedback to operator through LED (Green = Good)
- Provides immediate radio communication of torque status to Global 8 (OK/Bad) which displays result also.
- Light weight tool with good balance and cushion grip for good ergonomics.
- Dovetail and flattened body provide excellent fastener access in constrained-access applications.



*The SLTC-FM Wireless Clicker-Type Preset Torque Wrenches are available now!*

***Want to see this revolutionary system for yourself?  
Call us to arrange an in-plant demonstration!***

Part No.	Description
10479	Global 8 Controller (Includes U.S.-style power cable)
10474	Cable, Global 8 I/O (14' long 24 VDC I/O cable, bare wire to Global 8 connector)
10478	PST 1000 Pressure Sensor/Transceiver (Includes battery charger)
810311	Wireless Preset Click Wrench, 50 in.lb./6 Nm capacity, dovetail
810312	Wireless Preset Click Wrench, 150 in. lb./17 Nm capacity, dovetail
810313	Wireless Preset Click Wrench, 300 in. lb./34 Nm capacity, dovetail
810310	Wireless Preset Click Wrench, 300 in. lb./17 Nm capacity, dovetail (High Output Design)
810314	Wireless Preset Click Wrench, 750 in. lb./85 Nm capacity, dovetail
810315	Wireless Preset Click Wrench, 1800 in. lb./204 Nm capacity, dovetail
810305	Wireless Preset Click Wrench, 1800 in.lb./204 Nm capacity, dovetail, Ergo design
810316	Wireless Preset Click Wrench, 3000 in. lb./339 Nm capacity, 0.5" ratcheting square drive
810317	Wireless Preset Click Wrench, 3600 in. lb./408 Nm capacity, dovetail
810318	Wireless Preset Click Wrench, 4800 in. lb./542 Nm capacity, dovetail
810319	Wireless Preset Click Wrench, 7200 in. lb./813 Nm capacity, 0.75" ratcheting square drive



**Sturtevant  
Richmont®**  
Torque Measurement Systems

### ***Sturtevant Richmond***

3203 N. Wolf Road  
Franklin Park, IL 60131  
Phones: 847/455-8677 800/877-1347  
Fax: 847/455-0347  
E-mail: [CustomerService@sr torque.com](mailto:CustomerService@sr torque.com)  
Web: [www.srtorque.com](http://www.srtorque.com)