

SPECIFICATIONS

| | |
|---|---------------------------|
| Pressure Range | 1500-2000 psi/104-140 bar |
| Shank Size (SK58110 (Air) ,SK58120 (Water) , & SK58310 UW (Air))..... | 4-1/4 in. x 1 in. hex |
| Shank Size (SK58130(Air)) | 4-1/4 in. x 7/8 in. hex |
| Maximum Back Pressure | 250 psi/17 bar |
| Flow Range | 7-9 gpm/26-34 lpm |
| Porting | -8 SAE O-ring |
| Couplers | Not Included |
| Connect Size and Type | 3/8 in. Male Pipe Adapter |
| Hose Whips | Included |



| | |
|---------------------------------------|----------------|
| Weight | 67 lbs / 30 kg |
| Overall Length | 26 in. / 66 cm |
| Overall Width - Standard Handle | 18 in. / 46 cm |
| Maximum Fluid Temperature | 140° F/60° C |

ACCESSORIES

| | |
|--------------------|--------------------|
| DESCRIPTION | PART NUMBER |
|--------------------|--------------------|

Drill Steels for Use with Air

| | |
|---|-------|
| 1 in. Hex x 4-1/4 in. H thread, 12 in./30 cm U/C | 05168 |
| 1 in. Hex x 4-1/4 in. H thread, 18 in./46 cm U/C | 05169 |
| 1 in. Hex x 4-1/4 in. H thread, 24 in./61 cm U/C | 05170 |
| 1 in. Hex x 4-1/4 in. H thread, 36 in./91 cm U/C | 04915 |
| 1 in. Hex x 4-1/4 in. H thread, 48 in./122 cm U/C | 05171 |
| 1 in. Hex x 4-1/4 in. H thread, 72 in./183 cm U/C | 08905 |
| 1 in. Hex x 4-1/4 in. H thread, 96 in./244 cm U/C | 08906 |

| | |
|---|-------|
| 7/8 in. Hex x 4-1/4 in. H thread, 12 in./30 cm U/C | 05172 |
| 7/8 in. Hex x 4-1/4 in. H thread, 24 in./61 cm U/C | 05174 |
| 7/8 in. Hex x 4-1/4 in. H thread, 36 in./91 cm U/C | 05175 |
| 7/8 in. Hex x 4-1/4 in. H thread, 48 in./122 cm U/C | 05176 |

Drill Steels for Use with Water

| | |
|--|-------|
| 1 in. Hex x 4-1/4 in. 125 Rope Thread, 48 in./122 cm U/C | 05189 |
| 1 in. Hex x 4-1/4 in. 125 Rope Thread, 60 in./152 cm U/C | 05184 |
| Striking Bar, 1 in. Hex x 4-1/4 in. 125 Rope Thread | 05192 |
| Coupling, 125 Rope Thread | 05193 |
| Replacement Cup Seal for Striking Bar | 06929 |

Carbide Rock Bits for Use with Air (Shoulder Design)

| | |
|------------------------------|-------|
| 1-3/8 in. Diameter, H thread | 05177 |
| 1-1/2 in. Diameter, H thread | 05178 |

Carbide Rock Bits for Use with Water

| | |
|-------------------------------------|-------|
| 2 in. Diameter, 125 Rope Thread | 05189 |
| 2-1/4 in. Diameter, 125 Rope Thread | 05190 |
| 2-1/2 in. Diameter, 125 Rope Thread | 05191 |

SPECIAL SERVICE TOOLS

| DESCRIPTION | PART NUMBER | USAGE |
|--------------------------------|-------------|---|
| O-ring Tool Kit | 04337 | General Service of Seals |
| Spil Ring (Auto Valve Removal) | 04908 | Auto Valve Removal - Requires 04910 |
| Flow Sleeve Removal Tube | 04910 | Used with 04908 & 05508 |
| Bearing Puller Kit | 05064 | General Bearing Pulling |
| Bearing Installation Tool | 05044 | Install Motor Bushings |
| Bearing Installation Tool | 05061 | Install Motor Bushings |
| Latch Removal Tool | 05045 | Removal of Retaining Ring and Latch |
| Latch Installation Tool | 05879 | Installation of Retaining Ring and Latch |
| Accumulator Disassembly Tool | 05508 | Removal of Chamber from Cylinder |
| Accumulator Cylinder Puller | 05640 | Removal of Cylinder from Accumulator Housing |
| Collet, 7/8 inch | 05871 | Removal of Motor Bushings |
| Collet | 05068 | Removal of Motor Bushings |
| Accumulator Removal Tool | 05639 | Removal of Accumulator from Accumulator Housing |

PARTS LIST

| Item No | Part No | Qty | Description |
|---------|---------|-----|---|
| 1 | 04763 | 1 | AIR TUBE (SK58110, SK58 130 & SK58310 MODELS ONLY) |
| | 04965 | 1 | WATER TUBE (SK58120 MODEL ONLY) |
| 2 | 07064 | 1 | VENT PLUG |
| 3 | 04964 | 2 | HANDLE GRIP ASSEMBLY |
| 4 | 01714 | 1 | NUT HEAVY HEX JAM |
| 5 | 04786 | 2 | WASHER 5/8 TYPE A N |
| 6 | 04794 | 1 | O-RING 2-214 R16 ● |
| 7 | 04147 | 1 | LOCKNUT 1/2-20 |
| 8 | 04718 | 1 | VALVE LEVER |
| 9 | 04902 | 1 | RETAINING RING |
| 10 | 04751 | 1 | WASHER |
| 11 | 04793 | 1 | KAP SEAL ● |
| 12 | 04775 | 1 | CHARGE VALVE CAP |
| 13 | 04052 | 1 | O-RING 3-914 R17 ● |
| 14 | 04051 | 1 | CHARGING VALVE |
| 15 | — | 1 | O-RING (INCLD WITH ITEM 14)● |
| 16 | 00955 | 1 | PIPE PLUG |
| 17 | 00955 | 1 | PIPE PLUG |
| 18 | 01411 | 1 | O-RING 3-906 R17 ● |
| 19 | 04772 | 1 | ORIFICE PLUG |
| 20 | 01605 | 2 | O-RING |
| 21 | 04054 | 3 | O-RING 2-233 R17 ● |
| 22 | 04060 | 1 | ACCUMULATOR CYLINDER |
| 23 | 04059 | 1 | ACCUMULATOR DIAPHRAGM |
| 24 | 04779 | 1 | ACCUMULATOR CHAMBER |
| 25 | 04780 | 1 | BACK UP WASHER |
| 26 | 04386 | 1 | CUP SEAL ● |
| 27 | 04750 | 1 | WASHER |
| 28 | 06268 | 1 | TUBE SEAL (SK58120 & SK58130 MODELS ONLY) ● |
| 29 | 04734 | 1 | PISTON (SK58110 MODEL ONLY) |
| | 06265 | 1 | PISTON (SK58120, SK58130 & SK58310 MODELS ONLY) |
| 30 | 04068 | 1 | FLOW SLEEVE TUBE |
| 31 | 07889 | 1 | FLOW SLEEVE |
| 32 | 04065 | 1 | AUTOMATIC VALVE |
| 33 | 07890 | 1 | ROLL PIN 3/16 X 1.5 |
| 34 | 01652 | 2 | PIGTAIL HOSE ASSEMBLY |
| 35 | 04781 | 1 | INLET FLANGE |
| 36 | 02688 | 2 | CAPSCREW |
| 37 | 04792 | 1 | KAP SEAL ● |
| 38 | 02003 | 1 | O-RING 2-113 R16 ● |
| 39 | 04771 | 1 | WASHER |
| 40 | 04791 | 1 | KAP SEAL ● |
| 41 | 04795 | 1 | O-RING 2-218 R16 ● |
| 42 | 04777 | 1 | THROTTLE VALVE |
| 43 | 04778 | 1 | BLOWER TUBE NUT |
| 44 | 00016 | 1 | O-RING 2-015 R16 ● |
| 45 | 00175 | 1 | O-RING 2-014 R17 ● |
| 46 | 04660 | 1 | HOUSING |
| 47 | 00772 | 1 | KEY |
| 48 | 07291 | 1 | MODIFIED CAPSCREW |
| 49 | 04512 | 1 | RETAINING RING |
| 50 | 04764 | 1 | SWIVEL FITTING |
| 51 | 00106 | 1 | O-RING 2-012 R16 |
| 52 | 04765 | 1 | INLET SWIVEL BODY |
| 53 | 04767 | 1 | STREET ELBOW 45° 3/8 |
| 54 | 05202 | 1 | VALVE-AIR ONLY (SK58110, SK58130 & SK58310 MODELS ONLY) |
| 55 | 04801 | 1 | HOSE ASSEMBLY |

| Item No | Part No | Qty | Description |
|---------|---------|-----|--|
| 56 | 04066 | 1 | AUTOMATIC VALVE BODY |
| 57 | 04571 | 2 | PUSH PIN |
| 58 | 04067 | 4 | PUSH PIN |
| 59 | 03786 | 1 | GPM STICKER 7-9 2000P |
| 60 | 05152 | 1 | STANLEY STICKER |
| 61 | 04721 | 1 | LATCH CASTING |
| 62 | 04761 | 1 | RETAINING RING |
| 63 | 04759 | 1 | SPRING BACK-UP |
| 64 | 04758 | 1 | COIL SPRING |
| 65 | 04756 | 1 | LATCH WASHER |
| 66 | 04075 | 4 | SIDE ROD NUT |
| 67 | 01217 | 2 | CAPSCREW 3/8-16UNCX2-1/4 |
| 68 | 04748 | 1 | MOTOR PLATE |
| 69 | 00783 | 2 | PIPEPLUG 1/16-27X.242 |
| 70 | 04788 | 2 | DU BEARING |
| 71 | 03826 | 2 | DU BEARING |
| 72 | 04033 | 1 | IDLER GEAR |
| 73 | 01277 | 1 | O-RING 2-044 R17 ● |
| 74 | 00713 | 2 | DOWEL PIN |
| 75 | 04744 | 1 | DRIVE MOTOR CHAMBER |
| 76 | 04784 | 1 | DRIVE HEX (SK58110 MODEL ONLY) |
| | 06267 | 1 | DRIVE HEX (SK58120 & SK58310 MODELS ONLY) |
| | 05195 | 1 | DRIVE HEX (SK58130 MODEL ONLY) |
| 77 | 04787 | 1 | WOODRUFF KEY |
| 78 | 04373 | 4 | SIDE ROD |
| 79 | 04774 | 1 | GASKET ● |
| 80 | 23395 | 2 | QUAD RING -327 ● |
| 81 | 23399 | 2 | BACK-UP RING ● |
| 82 | 04769 | 1 | DRIVE MOTOR CONTROL BLOCK (SK58110, SK58130 & SK58310 MODELS ONLY) |
| | 06266 | 1 | DRIVE MOTOR CONTROL BLOCK (SK58120 MODEL ONLY) |
| 83 | 00634 | 2 | NYLON CAP LOCK |
| 84 | 01362 | 1 | O-RING 2-011 R16 ● |
| 85 | 01605 | 1 | O-RING 3-908 R17 ● |
| 86 | 18643 | 1 | SETSCREW 10-24 X 1/4 |
| 87 | 04753 | 1 | MOTOR CONTROL KNOB |
| 88 | 04773 | 1 | VALVE GUIDE |
| 89 | 04783 | 1 | MOTOR CONTROL VALVE |
| 90 | 04073 | 1 | O-RING 2-231 R17 ● |
| 91 | 30890 | 1 | ROD SEAL ● |
| 92 | 04755 | 1 | SEAL WASHER |
| 93 | 04790 | 1 | CUP SEAL ● |
| 94 | 03009 | 1 | ROLL PIN |
| 95 | 02688 | 1 | SHHCS 5/16-18UNCX3/4 |
| 96 | 03047 | 2 | ROLL PIN 3/16DIA X 3/4 |
| 97 | 04754 | 1 | THRUST BACK-UP WASHER |
| 98 | 04789 | 1 | THRUST WASHER |
| 99 | 04752 | 1 | DRIVE GEAR |
| 100 | 05641 | 1 | O-RING 2-3/8X2-1/2X1/16 90D (USED ON EARLY MODELS ONLY) |
| 101 | 00026 | 2 | O-RING 2-008 R16 ● |
| 102 | 04776 | 1 | TUBE CONNECTOR |
| 103 | 04796 | 1 | NAME TAG-SK58 (NOT A SERVICE ITEM) |
| 104 | 04768 | 1 | WATER VALVE (SK58120 MODEL ONLY) |

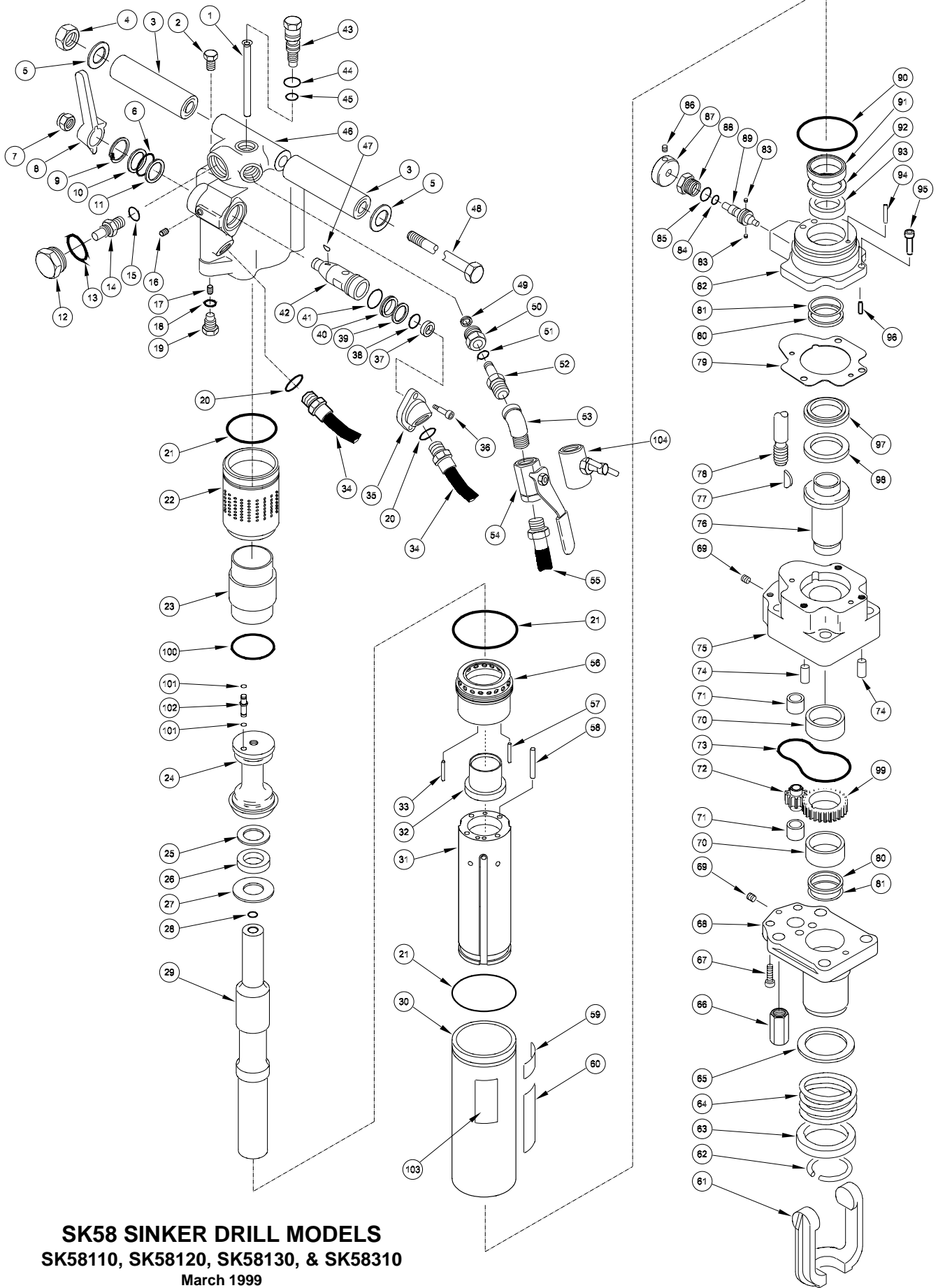
SEAL KIT P/N 04805

MODEL DESIGNATIONS

| | |
|----------------|--|
| SK58110 | 1 in. x 4-1/4 hex shank, air |
| SK58120 | 1 in. x 4-1/4 hex shank, water |
| SK58130 | 7/8 in. x 4-1/4 hex shank, air |
| SK58310 | 1 in. x 4-1/4 hex shank, air, under water use |

NOTE: Use Part Number, Part Name when ordering.

● Denotes Part Furnished in Seal Kit 04805.



SK58 SINKER DRILL MODELS
 SK58110, SK58120, SK58130, & SK58310
 March 1999