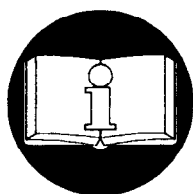


ASSEMBLY INSTRUCTIONS

for

QHP-K1100 QUANTUM HANDY PENDANT CONTROL KIT



READ THIS INSTRUCTION SHEET BEFORE USING THIS PRODUCT. This instruction sheet contains important installation information. Make this information available to all persons responsible for the installation, operation and maintenance of the product.

For use with Quantum Electric Hoists.
Additional supporting publications:

Publication	Document Number
Quantum Hoist Manual	MHD56105
Quantum International Hoist Manual	MHD56124
Quantum Trolley Manual	MHD56108
Quantum International Trolley Manual	MHD56125

HANDY-PENDANT REPLACEMENT

Refer to Dwg. TPH1038

! WARNING

• Disconnect power from hoist system.

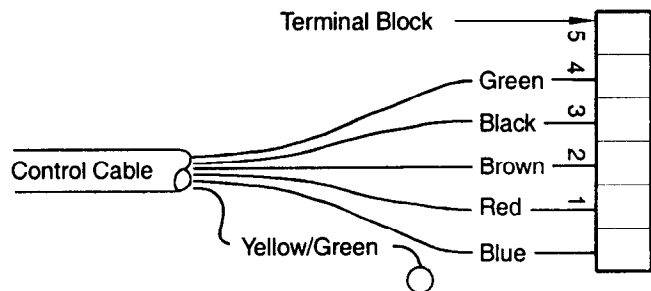
1. Remove bottom block assembly (112).
2. Slide cable connector on to control cable (316) at motor end.
3. Place load chain through middle of coiled control cable. Slide control cable up to motor. Temporarily fasten control cable to chain with tape or string.
4. Remove cover on hoist.
5. Note current pendant control wire connections on terminal block. Disconnect wires and remove old control cable with cable connector.
6. Insert new cable connector with locknut (this one is a 90 degree elbow) into hoist body and twist until tight. Do not tighten with locknut at this time.
7. Push control cable (316) wire ends through (315) connector until about 3/4 inch (19 mm) of cable covering is exposed inside hoist.
8. Tighten gland nut on connector.
9. Twist cable connector until it is pointing in direction of control cable coils and then tighten locknut.
10. Connect new control cable (316) wires to terminal block (as noted earlier).
11. Replace cover on hoist. Release control cable from chain.
12. Push control cable up load chain (from load end) about 18 inches (457 mm) and temporarily fasten.
13. Slide chain guide (106) and spring (107) onto chain and up about 12 inches (305 mm) from chain end.
14. Attach chain stopper (103) right below spring (107) and finger tighten screws.
15. Place half of the bottom block assembly (112) onto end of load chain and insert pendant connector (333). Clamp other side of chain connector into place and fasten with screws.
16. Remove screws and lockwashers from top of pendant body (314).
17. Lift pendant assembly up and place socket on top of pendant body (314).
17. Lift pendant assembly up and place socket on top of pendant body (314) into connector (333).
18. Insert screws and lockwashers and tighten.
19. Remove screws and lockwashers from bottom socket of pendant body (314).
20. Insert load hook (113) into socket. Orient hook throat to the position best suited for operation. Insert screws and lockwashers and tighten.

! CAUTION

- Electrical connections should be performed only by licensed electricians.

Connecting Control Cable

1. Remove cable connector cap, rubber grommet and plastic washer.
2. Screw cable connector body into pendant body (314), when strain relief body is pointed straight up, use locknut to tighten.
3. Free control cable from chain. Place cable connector cap on control cable followed by rubber grommet and plastic washer.
4. Remove screws and lockwashers, carefully remove switch cover.
5. Push control cable wire ends through connector until about 3/4 inch (19 mm) of cable covering is exposed.
6. Tighten gland nut on connector.
7. Insert screw through ground (earth) tab, ground (earth) wire eyelet and into pendant body then tighten.
8. Connect control cable wires to terminal strip. Refer to Dwg. MHP1067.



(Dwg. MHP1067)

9. Place gasket over rear access hole followed by cover.
10. Insert screws and tighten.

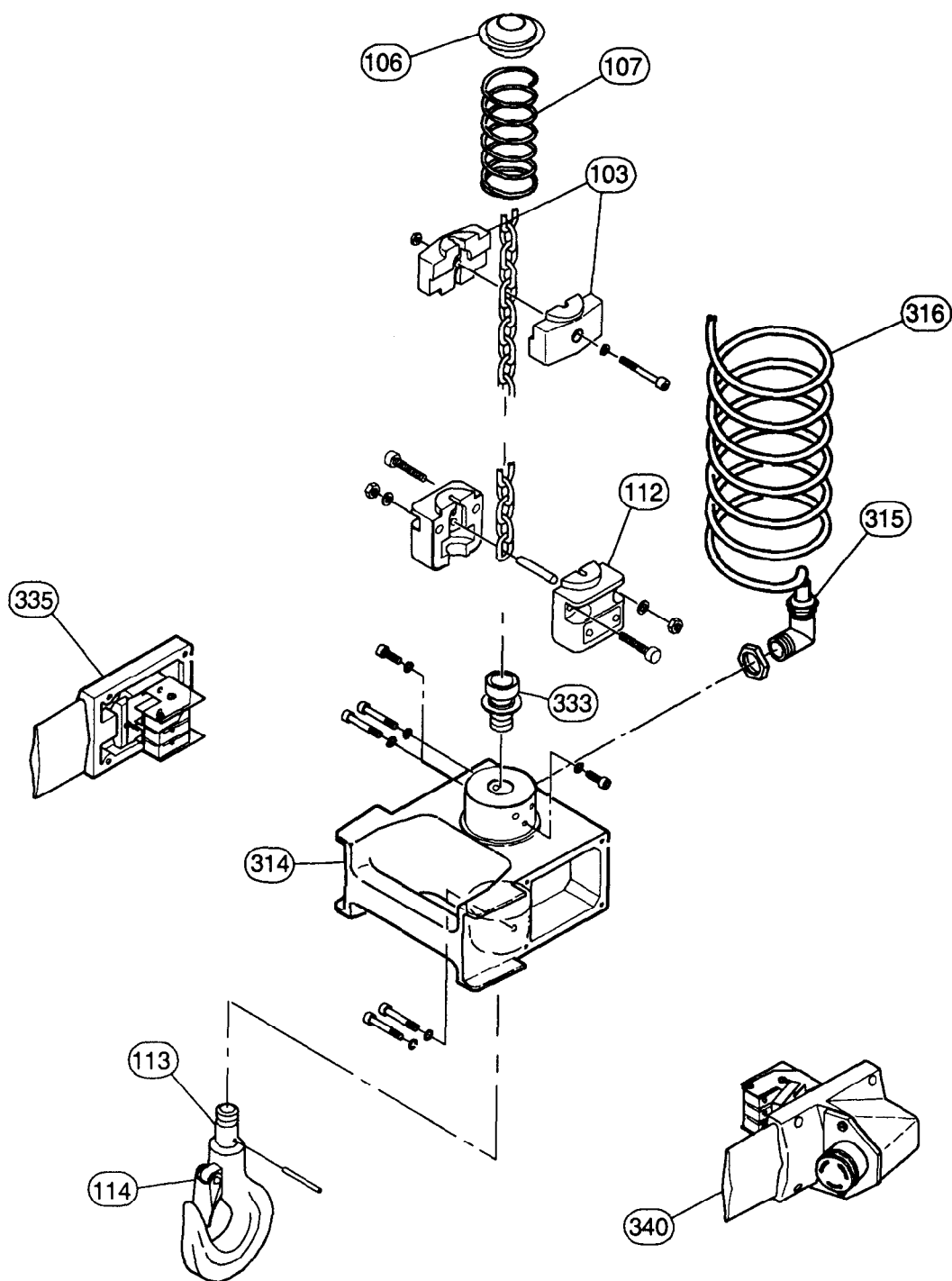
Adjusting Height of Limit Stop

1. Operate Handy-Pendant and raise hook to highest position that it should go.
2. Loosen screw in chain stopper (103) and remove.
3. Slide spring (107) and chain guide (106) up chain until chain guide (106) touches the bottom of the hoist.
4. Place chain stopper (103) back on chain directly below spring (107). There should be some tension in spring, tighten screws.

Testing Pendant

1. Turn on power to hoist.
2. Depress upper part of control levers and observe movement of load hook.
3. Depress lower part of control levers and observe movement of load hook. If hook movement does not correspond to lever direction, recheck all electrical connections.
4. Depress Emergency Stop Button. Depress each of the levers one at a time and observe. No hook movement should be possible. Release Emergency Stop Button by twisting.

HANDY-PENDANT ASSEMBLY PARTS DRAWING



(Dwg. TPH1038)

HANDY-PENDANT ASSEMBLY PARTS LIST

Item No.	Description of Part	Qty. Total	Part Number	
			Q25	Q50
103	Chain Stopper Assembly	1	71282438	71282446
106	Spring Guide	1	71277636	71278436
107	Chain Spring	1	71277644	
112	Bottom Block Assembly	1	71272652	71272629
113	Bottom Hook Assembly	1	10580645	
114	Hook Latch Kit	1	71275275	
314	Pendant Body	1	04611455	
315	Connector	2	04611463	
316	Control Cable	As Req'd	04611471	
333	Pendant Connector	1	04689030	04611612
335	Cover Assembly	1	04611323	
340	Emergency Stop Cover Assembly	1	04611331	

United States Office Locations

For Order Entry and Order Status

**Ingersoll-Rand
Distribution Center**
P.O. Box 618
510 Hester Drive
White House, TN 37188
Phone: (615) 672-0321
Fax: (615) 672-0801

For Technical Support

Ingersoll-Rand
1725 U.S. Highway #1-N
Southern Pines, NC 28387
Phone: (910) 692-8700
Fax: (910) 692-7822

Web Site
www.ingersoll-rand.com

International Office Locations

Offices and distributors in principal cities throughout the world. Contact the nearest Ingersoll-Rand office for the name and address of the distributor in your country or write/fax to:

Europe, Middle East and Africa

Ingersoll-Rand Material Handling Douai Operations

111, avenue Roger Salengro
59450 Sin Le Noble, France
Phone: (33) 3-27-93-08-08
Fax: (33) 3-27-93-08-00