

INGERSOLL-RAND®

PARTS LIST

For

“PROMAXX™” Paving Breaker

Models: MX60 & MX90



Read this instruction manual before operating this equipment.

Designed and Built by Ingersoll-Rand Company
Roanoke, Va. 24019-5198 U.S.A.



Certified ISO-9001 (ANSI/ASQC Q91)
Certification No. QSR-80

"PROMAXX™" Series Paving Breaker**Warranty Policy Statement**

INGERSOLL-RAND COMPANY WARRANTS THAT ITS "PROMAXX®" SERIES PAVING BREAKERS ARE FREE OF DEFECTS IN MATERIAL AND WORKMANSHIP FOR THE FOLLOWING PERIODS:

- | | |
|--|---------|
| A. MAIN BREAKER HOUSING & FRONTHEAD CASTING | 3 YEARS |
| B. ALL OTHER COMPONENTS: | 1 YEAR |

SHOULD AN INGERSOLL-RAND "PROMAXX®" SERIES PAVING BREAKER PROVE DEFECTIVE DURING THE SPECIFIED WARRANTY PERIODS, INGERSOLL-RAND WILL REPLACE OR REPAIR IT FREE OF CHARGE.

THIS WARRANTY DOES NOT APPLY TO NORMAL WEAR AND TEAR, OR TO UNITS THAT HAVE BEEN MODIFIED, MISUSED, OR REPAIRED IN A MANNER NOT APPROVED BY INGERSOLL-RAND COMPANY. THE OPINION OF INGERSOLL-RAND IN DETERMINING COMPLIANCE WITH THE AFOREMENTIONED CONDITIONS WILL BE FINAL.

Ingersoll-Rand Company

Limitation of Liability

THE REMEDIES OF THE USER SET FORTH UNDER PROVISIONS OF WARRANTY OUTLINED ABOVE ARE EXCLUSIVE AND THE TOTAL LIABILITY OF INGERSOLL-RAND OR ITS DISTRIBUTORS WITH RESPECT TO THIS SALE OR THE EQUIPMENT AND SERVICE FURNISHED HEREUNDER, IN CONNECTION WITH THE PERFORMANCE OR BREACH THEREOF, OR FROM THE SALE, DELIVERY, INSTALLATION, REPAIR OR TECHNICAL DIRECTION COVERED BY OR FURNISHED UNDER THIS SALE. WHETHER BASED ON CONTRACT, WARRANTY, NEGLIGENCE, INDEMNITY, STRICT LIABILITY OR OTHERWISE SHALL NOT EXCEED THE PURCHASE PRICE OF THE UNIT OF EQUIPMENT UPON WHICH SUCH LIABILITY IS BASED.

INGERSOLL-RAND, ITS SUPPLIER(S) AND ITS DISTRIBUTORS SHALL IN NO EVENT BE LIABLE TO THE USER, ANY SUCCESSORS IN INTEREST OR ANY BENEFI-

CIARY OR ASSIGNEE RELATING TO THIS SALE FOR ANY CONSEQUENTIAL, INCIDENTAL, INDIRECT, SPECIAL OR PUNITIVE DAMAGES ARISING OUT OF THIS SALE OR ANY BREACH THEREOF, OR ANY DEFECTS IN, OR FAILURE OF, OR MALFUNCTION OF THE EQUIPMENT UNDER THIS SALE WHETHER BASED UPON LOSS OF USE, LOST PROFITS OR REVENUE, INTEREST, LOST GOODWILL, WORK STOPPAGE, IMPAIRMENT OF OTHER GOODS, LOSS BY REASON OF SHUTDOWN OR NON-OPERATION, INCREASED EXPENSES OF OPERATION OF THE EQUIPMENT, COST OF PURCHASE OF REPLACEMENT POWER OR CLAIMS OF USERS OR CUSTOMERS OF THE USER FOR SERVICE INTERRUPTION WHETHER OR NOT SUCH LOSS OR DAMAGE IS BASED ON CONTRACT, WARRANTY, NEGLIGENCE, INDEMNITY, STRICT LIABILITY OR OTHERWISE.

NOTE: THE VERTICAL BAR SHOWN TO THE LEFT OF TEXT DESIGNATES A REVISION HAS BEEN MADE SINCE THE PREVIOUS PRINTING.

| | |
|--|-----|
| INTRODUCTION | 1-1 |
| ILLUSTRATION "PROMAXX" PAVING BREAKER .. | 2-1 |
| PARTS LIST | 2-3 |
| GENERAL INFORMATION | 3-1 |

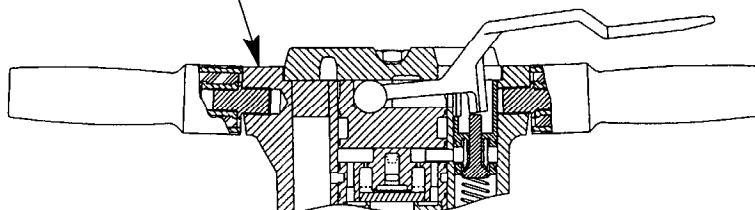
ORDERING INSTRUCTIONS

When ordering service parts, please specify:

1. The **NAME** of each part as listed.
2. The **PART NUMBER** as listed or stamped on the part.
3. The **BATCH/LOT NUMBER** of the equipment.

DO NOT use illustration numbers when ordering service parts. To save time, send all orders for parts to the nearest branch office or agent. IF IT IS NECESSARY TO SEND ANY PART OF THIS EQUIPMENT TO THE FACTORY, INQUIRE AT OUR NEAREST BRANCH OFFICE OR AGENT FOR SPECIAL INSTRUCTIONS.

BATCH/LOT NUMBER IS STAMPED
IN THIS AREA.



NOTICE

SAVE THESE INSTRUCTIONS. DO NOT DESTROY.

The use of service parts other than those included within the Ingersoll-Rand® approved parts list may create hazardous conditions over which Ingersoll-Rand® Company has no control. Therefore Ingersoll-Rand® Company cannot be held responsible for equipment in which non-approved repair parts are installed.

All information, illustrations, and specifications in this parts list are based on the latest information available at the time of publication. Product improvement is a continuing goal at Ingersoll-Rand®. Design and specifications are subject to change without notice or obligation.

When the life of the tool has expired, it is recommended that the tool be disassembled, degreased and parts be separated by material so that they can be recycled.



1

Alphabetical Index

| <u>Title</u> | <u>Page No.</u> |
|--------------------------|-----------------|
| Introduction | 1 |
| Safety First | 1 |
| Safety Precautions | 1 |

1. INTRODUCTION.

This parts list contains service part numbers, general model information and important safety information for the "PROMAXX™" Paving Breaker Models MX60 & MX90 (hereafter referred to as paving breaker).

2. SAFETY FIRST.

SAFETY FIRST is the primary concern for the protection of both, personnel and the paving breaker during any phase of operation. All personnel must thoroughly understand all safety precautions before operating or doing any maintenance work on the paving breaker.

3. SAFETY PRECAUTIONS.

The Safety Precautions listed are intended to make all personnel aware of the hazards while working on or near a paving breaker. All personnel must use common sense and a good working practice while operating and maintaining these paving breakers. The safety precautions listed are of a general nature and cannot cover every possible situation:

- a. Always wear approved hard hat, safety shoes, safety glasses, respirator and ear protection when near a paving breaker in operation. Failure to wear approved safety equipment could result in bodily injury.
- b. Use only Ingersoll-Rand® replacement parts.
- c. Prolonged exposure to excessive noise levels without the use of proper ear protection can result in permanent hearing loss.
- d. **DO NOT** indulge in horseplay. Distractions can cause accidents.
- e. Keep your hands off the throttle lever until it is time to start breaker operation.
- f. Maintain a steady balance at all times.
- g. Never put your face close to the paving breaker.
- h. Never rest the paving breaker on your foot.
- i. Never point the paving breaker at anyone.
- j. Never start the paving breaker when it is lying on the ground.

k. Compressed air is dangerous. Never point an air hose at yourself or co-workers. Never blow your clothes free of dust with compressed air.

l. Be sure all hose connections are tight. A loose hose not only causes leaks, but it may come completely off the breaker, whip around, and injure the operator and others in the area. Attach safety cables to all hoses to prevent injury if a hose is accidentally broken.

m. Never disconnect a pressurized air hose. Before disconnecting a hose, shut-off the air at the compressor and bleed the paving breaker.

n. **DO NOT** operate the paving breaker without a paving breaker tool locked in the fronthead. Hold the tool firmly against the work.

o. Always keep both hands on the handle while operating the paving breaker.

p. The operator must keep his legs and feet clear of the paving breaker tool to prevent injury if the tool breaks. If a tool

breaks, the paving breaker (with a piece of broken tool projecting from fronthead) will suddenly drop to the ground.

q. **DO NOT** "ride" the paving breaker with one leg over the handle. The operator can be injured if the tool breaks while he is riding the paving breaker.

r. Know what is underneath the material you are about to break. Be alert for any buried water, gas, sewer, telephone, or electric lines.

s. If you hit something, shut off the paving breaker immediately and find out what it is. Use a shovel, not the paving breaker, to uncover the object carefully.

t. When using any solvent to clean parts, make sure that it meets current safety and health standards and that it is used in an area that is adequately ventilated.

u. **DO NOT** operate the paving breaker without a properly installed oil filter and oil fill plug.

v. **DO NOT** lift or transport the breaker by the throttle lever. Damage may occur.

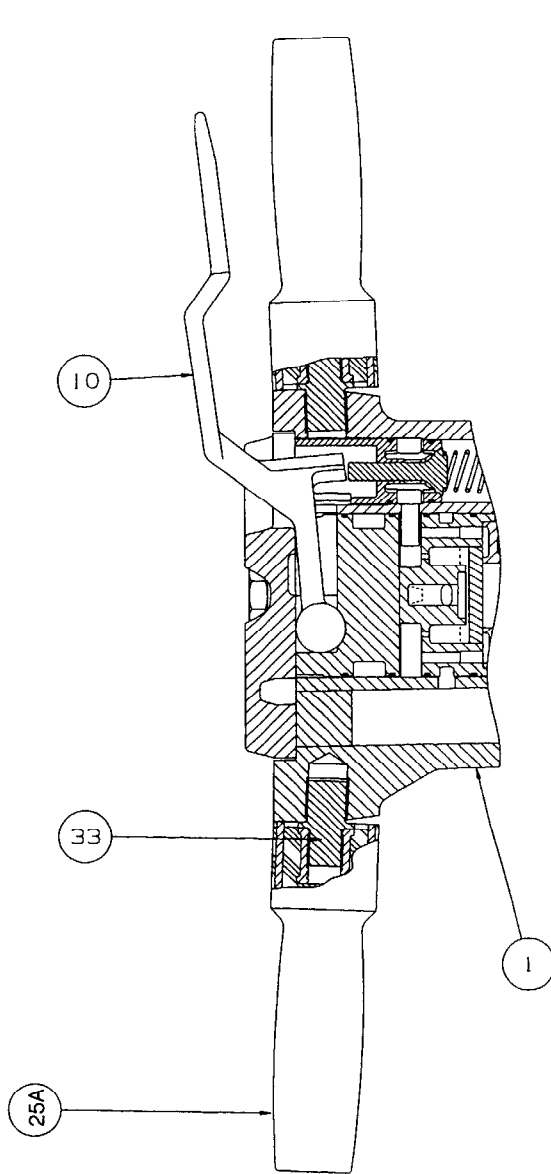


PARTS LIST

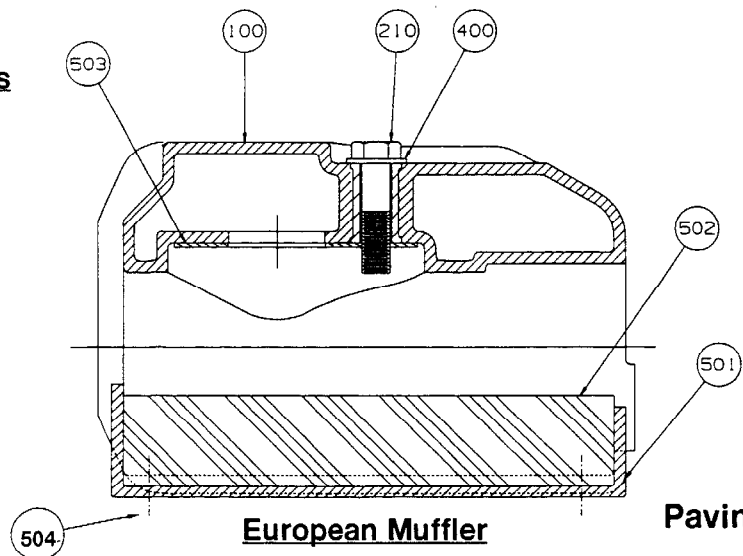
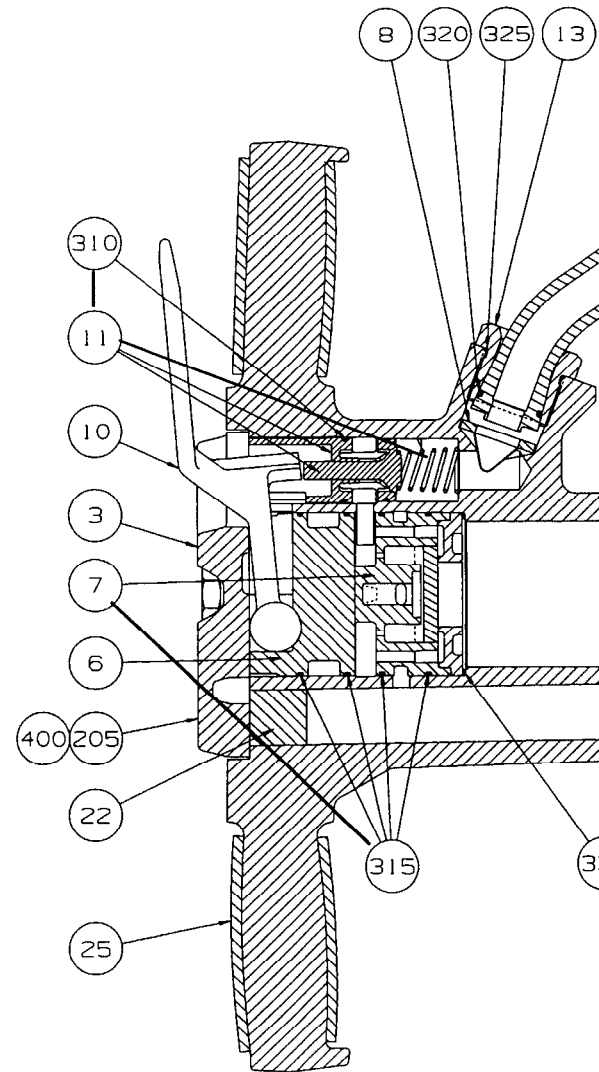
Revision 8

May 7, 1997

ILLUSTRATION "PF"
MODEL



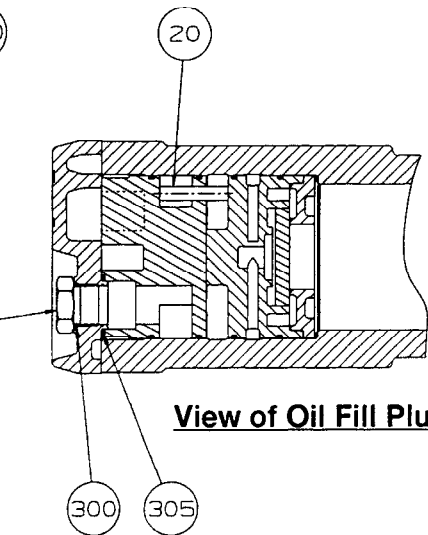
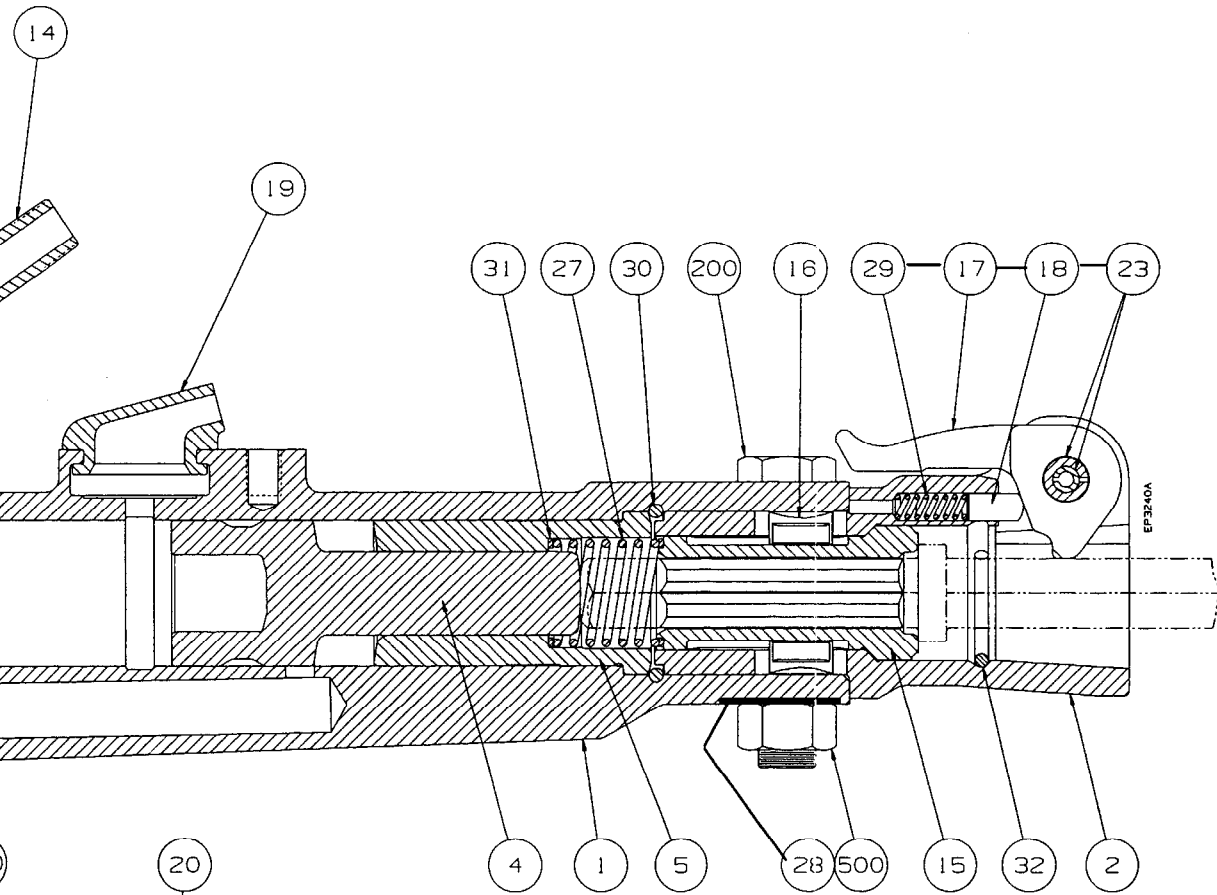
Optional Flex Handles



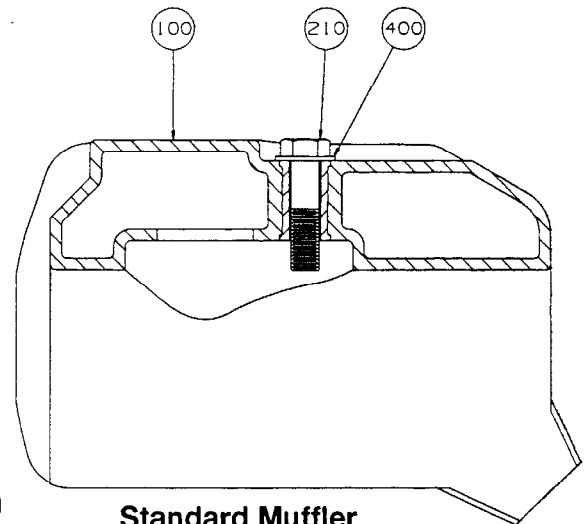
European Muffler

Paving Breaker

OMAXX™ PAVING BREAKER
S: MX60 & MX90



View of Oil Fill Plug & Filter



Standard Muffler

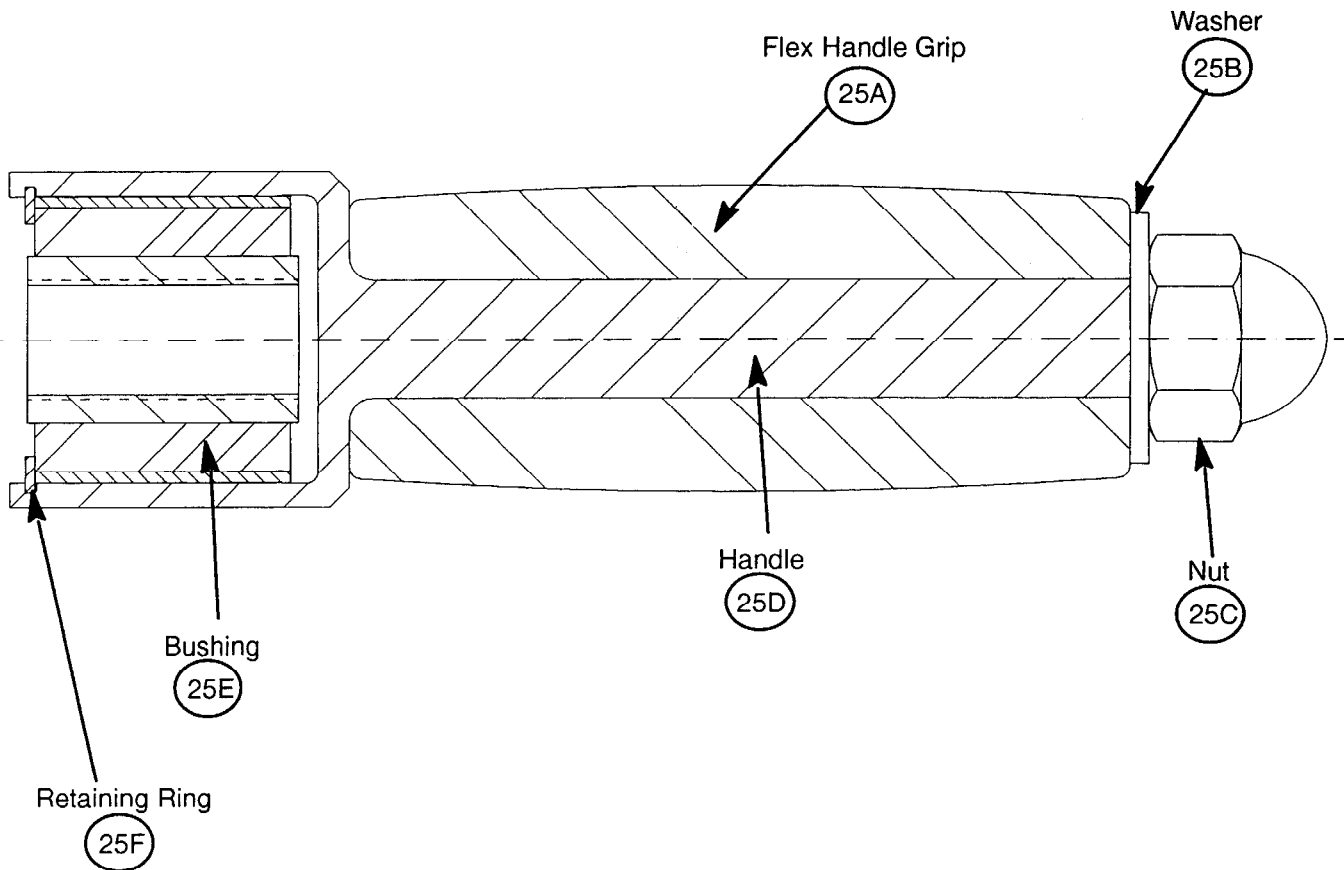
Models MX60, MX60S & MX90, MX90S – Sectional Illustration
(For Parts List, refer to Page 2)



FLEX HANDLE

ILLUSTRATION FLEX HANDLE

MX60-STD-F, MX60-OPT-AF, MX60S-STD-F, MX60S-OPT-AF,
MX90-STD-F, MX90-OPT-AF, MX90S-STD-F, MX90S-OPT-AF



| Ref. No. | Name of Part | QTY | U.S. MUFFLER KIT # 52080298 FOR MX60 | | | | MUFFLED VERSION FOR | | |
|----------|-------------------------------------|-----|--------------------------------------|------------------------|------------------------|-------------------------|-----------------------|-------------------------|-----------------------|
| | | | MX60-STD 51957181 | MX60-OPT-A 51957207 | MX60-STD-F 51957199 | MX60-OPT-AF 51957215 | MX60S-STD 51988822 | MX60S-OPT-A 51988830 | MX60S-STD 51988830 |
| 1 | HOUSING | 1 | NSS | NSS | NSS | NSS | NSS | NSS | |
| 2 | FRONTHEAD | 1 | 51917540 | X | X | X | X | X | |
| 3 | BACKHEAD | 1 | 51943447 | X | X | X | X | X | |
| 4 | PISTON | 1 | 51984615 | X | X | X | X | X | |
| 4 | • PISTON | 1 | 51999720 | X | X | X | X | X | |
| 4 | PISTON | 1 | | | | | | | |
| 5 | PISTON SEAT | 1 | 51949907 | X | X | X | X | X | |
| 5 | • PISTON SEAT | 1 | 51999738 | X | X | X | X | X | |
| 5 | PISTON SEAT | 1 | | | | | | | |
| 6 | HOUSING PLUG | 1 | 51949857 | X | X | X | X | X | |
| 7 | VALVE CHEST KIT (MX60) | 1 | 52082682 | X | X | X | X | X | |
| 7 | VALVE CHEST KIT (MX90) | 1 | | | | | | | |
| 8 | AIR STRAINER | 1 | 51998367 | X | X | X | X | X | |
| 10 | THROTTLE LEVER | 1 | 51943017 | X | 51955565 | X | 51943017 | X | 51955565 |
| 11 | THROTTLE VALVE KIT | 1 | 51955375 | X | X | X | X | X | |
| 13 | AIR CONNECTION CAP | 1 | 51361798 | X | X | X | X | X | |
| 14 | AIR CONNECTION NIPPLE | 1 | 51361863 | X | X | X | X | X | |
| 15 | ANVIL BUSHING (1-1/4 IN. HEX) | 1 | 51943470 | | X | | X | | |
| 15 | ANVIL BUSHING (1-1/8 IN. HEX) | 1 | | 51948131 | | X | | X | |
| 16 | ANVIL BUSHING RETAINER | 2 | 51944015 | X | X | X | X | X | |
| 17 | LATCH KIT | 1 | 51955383 | X | X | X | X | X | |
| 18 | PLUNGER | 1 | 51945079 | X | X | X | X | X | |
| 19 | EXHAUST DEFLECTOR | 1 | 51729036 | X | X | X | | | |
| 20 | FILTER | 1 | 52089802 | X | X | X | X | X | |
| 21 | OIL FILL PLUG | 1 | 51370203 | X | X | X | X | X | |
| 22 | RUBBER PLUG (MX60) | 1 | 51983666 | X | X | X | X | X | |
| 22 | RUBBER PLUG (MX90) | 1 | | | | | | | |
| 23 | ROLL PIN KIT | 1 | 51792802 | X | X | X | X | X | |
| 25 | HANDLE SLEEVE | 2 | 51952869 | X | | | X | X | |
| 25 | FLEX HANDLE | 2 | | | 52084936 | X | | | |
| 25A | FLEX HANDLE GRIP | 2 | | | 52084902 | X | | | |
| 25B | WASHER | 1 | | | 51948016 | X | | | |
| 25C | NUT | 1 | | | 95914404 | X | | | |
| 25D | HANDLE | 1 | | | 52082658 | X | | | |
| 25E | BUSHING | 1 | | | 52091105 | X | | | |
| 25F | RETAINING RING | 1 | | | 95955829 | X | | | |
| 27 | ANVIL BUSHING SPRING | 1 | 51952828 | X | X | X | X | X | |
| 28 | FRONTHEAD WASHER | 1 | 51369171 | X | X | X | X | X | |
| 28 | • FRONTHEAD WASHER | 1 | 52080736 | X | X | X | X | X | |
| 29 | PLUNGER SPRING | 1 | 51952836 | X | X | X | X | X | |
| 30 | PISTON SEAT RETAINER | 1 | 51955862 | X | X | X | X | X | |
| 31 | SPRING SEAT | 2 | 51956506 | X | X | X | X | X | |
| 32 | ANVIL BUSHING RETAINER | 1 | 51954337 | X | X | X | X | X | |
| 33 | FLEX HANDLE CONNECTOR | 2 | | | 51913440 | X | | | |
| 100 | MUFFLER (FURNISHED W/BOLT & WASHER) | 1 | | | | | 52080298 | X | |



LIST

[illegible]

AVAILABLE KITS

lot number RVL 1501 and above

MX90, MX90S

to Pages 1 and 2)

52082682 VALVE CHEST KIT 1 .. 51955383 LATCH KIT 1
51955391 VALVE CHEST KIT 1 .. 51792802 ROLL PIN KIT 1
51955375 THROTTLE VALVE KIT 1

| EUROPE ONLY | | U.S. MUFFLER KIT #51953453 FOR MX90 | | | | MUFFLED VERSION FOR EUROPE ONLY | | | |
|-----------------|--------------------------|-------------------------------------|------------------------|------------------------|-------------------------|---------------------------------|-------------------------|-------------------------|--------------------------|
| -STD-F 88848 | MX60S-OPT-AF 51988855 | MX90- STD 51955110 | MX90-OPT-A 51955136 | MX90-STD-F 51955268 | MX90-OPT-AF 51955284 | MX90S- STD 51988632 | MX90S-OPT-A 51988640 | MX90S-STD-F 51988657 | MX90S-OPT-AF 51988665 |
| SSS | NSS | NSS | NSS | NSS | NSS | NSS | NSS | NSS | NSS |
| X | X | X | X | X | X | X | X | X | X |
| X | X | X | X | X | X | X | X | X | X |
| X | X | | | | | | | | |
| X | X | | | | | | | | |
| | | 51948368 | X | X | X | X | X | X | X |
| X | X | | | | | | | | |
| X | X | | | | | | | | |
| | | 51943462 | X | X | X | X | X | X | X |
| X | X | X | X | X | X | X | X | X | X |
| X | X | | | | | | | | |
| | | 51955391 | X | X | X | X | X | X | X |
| X | X | X | X | X | X | X | X | X | X |
| 5565 | X | 51943017 | X | 51955565 | X | 51943017 | X | 51955565 | X |
| X | X | X | X | X | X | X | X | X | X |
| X | X | X | X | X | X | X | X | X | X |
| X | X | X | X | X | X | X | X | X | X |
| X | | X | | X | | X | | X | |
| | X | | X | | X | | X | | X |
| X | X | X | X | X | X | X | X | X | X |
| X | X | X | X | X | X | X | X | X | X |
| X | X | X | X | X | X | X | X | X | X |
| | | X | X | X | X | | | | |
| X | X | X | X | X | X | X | X | X | X |
| X | X | X | X | X | X | X | X | X | X |
| X | X | | | | | | | | |
| | | 51944007 | X | X | X | X | X | X | X |
| X | X | X | X | X | X | X | X | X | X |
| | | X | X | | | X | X | | |
| X | X | | | X | X | | | X | X |
| X | X | | | X | X | | | X | X |
| X | X | | | X | X | | | X | X |
| X | X | | | X | X | | | X | X |
| X | X | | | X | X | | | X | X |
| X | X | | | X | X | | | X | X |
| X | X | | | X | X | | | X | X |
| X | X | X | X | X | X | X | X | X | X |
| X | X | 51378438 | X | X | X | X | X | X | X |
| X | X | | | | | | | | |
| X | X | X | X | X | X | X | X | X | X |
| X | X | X | X | X | X | X | X | X | X |
| X | X | X | X | X | X | X | X | X | X |
| X | X | X | X | X | X | X | X | X | X |
| X | X | | | X | X | | | X | X |
| X | X | | | | | 51953453 | X | X | X |

| Ref. No. | Name of Part | Q T Y | U.S. MUFFLER KIT # 52080298 FOR MX60 | | | | MUFFLED VERSION FOR EUR | | |
|-------------|--------------------------------|-------------|--------------------------------------|------------------------|------------------------|-------------------------|---------------------------|-------------------------|-----------------------|
| | | | MX60- STD 51957181 | MX60-OPT-A 51957207 | MX60-STD-F 51957199 | MX60-OPT-AF 51957215 | MX60S- STD 51988822 | MX60S-OPT-A 51988830 | MX60S-STD 51988848 |
| 200 | FRONTHEAD BOLT (3/4) (MX60) | 1 | 95105573 | X | X | X | X | X | X |
| 200 | • FRONTHEAD BOLT (7/8) (MX60) | 1 | 95749537 | X | X | X | X | X | X |
| 200 | FRONTHEAD BOLT (1") (MX90) | 1 | | | | | | | |
| 205 | BACKHEAD BOLT | 4 | 95054078 | X | X | X | X | X | X |
| 210 | MUFFLER BOLT | 1 | | | | | 95054144 | X | X |
| 300 | OIL FILL PLUG O-RING | 1 | 95209870 | X | X | X | X | X | X |
| 305 | BACKHEAD O-RING | 1 | 95018107 | X | X | X | X | X | X |
| 310 | THROTTLE BODY O-RING | 2 | 95097705 | X | X | X | X | X | X |
| 315 | VALVE CHEST O-RING | 2 | 03242559 | X | X | X | X | X | X |
| | HOUSING PLUG O-RING | 2 | 03242559 | X | X | X | X | X | X |
| 320 | CONNECTION NIPPLE O-RING | 1 | 95086161 | X | X | X | X | X | X |
| 325 | CONNECTION CAP O-RING | 1 | 95086112 | X | X | X | X | X | X |
| 330 | VALVE COVER O-RING | 1 | 95086583 | X | X | X | X | X | X |
| 400 | BACKHEAD WASHER | 4 | 51948016 | X | X | X | X | X | X |
| 400 | MUFFLER BOLT WASHER | 1 | | | | | 51948016 | X | X |
| 500 | FRONTHEAD NUT (MX90) | 1 | | | | | | | |
| 500 | FRONTHEAD NUT (3/4) (MX60) | 1 | 95227112 | X | X | X | X | X | X |
| 500 | • FRONTHEAD NUT (7/8) (MX60) | 1 | 95477196 | X | X | X | X | X | X |
| 501 | MUFFLER BACK PLATE | 1 | | | | | 52082450 | X | X |
| 502 | MUFFLER FOAM | 1 | | | | | 52083888 | X | X |
| 503 | GASKET | 1 | | | | | 52083045 | X | X |
| 504 | MUFFLER SCREW 1/4X1-1/4 (MX60) | 4 | | | | | 52084621 | X | X |
| | | | | | | | | | |
| | | | | | | | | | |
| | | | | | | | | | |
| | | | | | | | | | |

LUBRICATION (Furnished Only When Specially Ordered)

51378701 . ROCK DRILL OIL ... (LIGHT) ... 1 GAL
 51378727 . ROCK DRILL OIL ... (LIGHT) ... 5 GAL
 51378743 . ROCK DRILL OIL ... (LIGHT) ... 55 GAL

• NOTE: These parts are used on tools with batc

Parts List for MX60, MX60

(For Sectional Illustration Refer

GENERAL.

The "PROMAXX™" Paving Breaker Model MX60 is a medium-duty and the MX90 is a heavy-duty breaker that provide maximum performance at minimum cost. They are designed for general paving breaker work where their size and weight range is necessary. With the two-piece design (breaker housing and fronthed) the paving breakers are easier to maintain with minimum disassembly.

STANDARD EQUIPMENT.

Each paving breaker is a complete unit ready to be put into service with proper lubrication. There are no extra parts or special fittings required.

#

NOTICE**PAVING BREAKER COMBINATIONS.**

The following is a list of all available combinations (by model and part number) for all MX60 & MX90 Paving Breakers:

1) MX60 Models:

a. **MX60-STD (51957181).** This paving breaker includes an anvil bushing which

accommodates a 1-1/4 in. Hex. x 6 in. long (32mm Hex. x 152mm long) paving breaker tool shank.

b. **MX60-STD-F (51957199).** This paving breaker includes an anvil bushing which accommodates a 1-1/4 in. Hex. x 6 in. long (32mm Hex. x 152mm long) paving breaker tool shank and flex handles.

c. **MX60-OPT-A (51957207).** This paving breaker includes an anvil bushing which accommodates a 1-1/8 in. Hex. x 6 in. long (28mm Hex. x 152mm long) paving breaker tool shank.

d. **MX60-OPT-AF (51957215).** This paving breaker includes an anvil bushing which accommodates a 1-1/8 in. Hex. x 6 in. long (28mm Hex. x 152mm long) paving breaker tool shank and flex handles.

e. **MX60S-STD (51988822).** This paving breaker is the same as the standard paving breaker, but includes a muffler. **(Note: This paving breaker is for European customers only.)**

f. **MX60S-OPT-A (51988830).** This paving breaker is the same as the MX60-OPT-A paving breaker, but includes a muffler. **(Note: This paving breaker is for European customers only.)**

g. **MX60S-OPT-AF (51988855).** This paving breaker is the same as the MX60-OPT-AF paving breaker, but includes a muffler. **(Note: This paving breaker is for European customers only.)**

h. **MX60S-STD-F (51988848).** This paving breaker is the same as the MX60-STD-F paving breaker, but includes a muffler. **(Note: This paving breaker is for European customers only.)**

2) MX90 Models:

a. **MX90-STD (51955110).** This paving breaker includes an anvil bushing which accommodates a 1-1/4 in. Hex. x 6 in. long (32mm Hex. x 152mm long) paving breaker tool shank.

b. **MX90-STD-F (51955268).** This paving breaker includes an anvil bushing which accommodates a 1-1/4 in. Hex. x 6 in. long (32mm Hex. x 152mm long) paving breaker tool shank and flex handles.

c. **MX90-OPT-A (51955136).** This paving breaker includes an anvil bushing which accommodates a 1-1/8 in. Hex. x 6 in. long (28mm Hex. x 152mm long) paving breaker tool shank.

d. **MX90-OPT-AF (51955284).** This paving breaker includes an anvil bushing which accommodates a 1-1/8 in. Hex. x 6 in. long (28mm Hex. x 152mm long) paving breaker tool shank and flex handles.

e. **MX90S-STD (51988632).** Same as MX90-STD except includes muffler.

f. **MX90S-OPT-A (51988640).** Same as MX90-OPT-A except includes muffler.

g. **MX90S-STD-F (51988657).** Same as MX90-STD-F except includes muffler.

h. **MX90S-OPT-AF (51988665).** Same as MX90-OPT-AF except includes muffler.

MUFFLER.

An add on muffler is available for drills without one.

The muffler assembly is used to reduce Paving Breaker noise without hindering performance. This assembly is available for Paving Breakers that do not have a muffler.

LUBRICATION.

A high-quality rock drill oil conforming to the physical and chemical properties outlined in the instruction manual, must be added to the operating air supply to lubricate the moving parts of the paving breakers. The method of lubrication depends on actual operating conditions and customer preference:

▲CAUTION

THE LUBRICATING OIL RESERVOIR BUILT INTO THE HOUSING PLUG IN THE PAVING BREAKER MUST BE CHECKED EVERY TWO HOURS AND REFILLED AS NECESSARY.

a. The lubricating-oil reservoir built in the housing plug will provide proper lubrication. It must be checked every two hours

and refilled as necessary. Refer to the instruction manual listed below for instructions on how to fill the reservoir.

b. For intermittent operation with an air-supply hose no longer than 50 ft. (15 m), a compressor-mounted lubricator can be used.

c. For continuous operation during an eight-hour shift, an Ingersoll-Rand Part Number 35364322, or other constant-feed air line lubricator, should be installed in the air-supply line about 11.5 ft. (3.5 m) from the breaker. The 35364322 has a capacity

of 1 U.S. pint (0.47 liters) and will be furnished when specially ordered.

NOTICE

Refer to IM6085 "Instruction Manual For "PROMAXX™" Paving Breaker Models MX60 & MX90" for installation and operation instructions, and RM6085 "Maintenance and Repair Manual For "PROMAXX™" Paving Breaker Models MX60 & MX90" for maintenance instructions.



G

GENERAL INFORMATION, 3-1

I

ILLUSTRATION

FLEX HANDLE, 2-2

MX60 & MX90, 2-1

INTRODUCTION, 1-1

P

PARTS LIST, 2-3

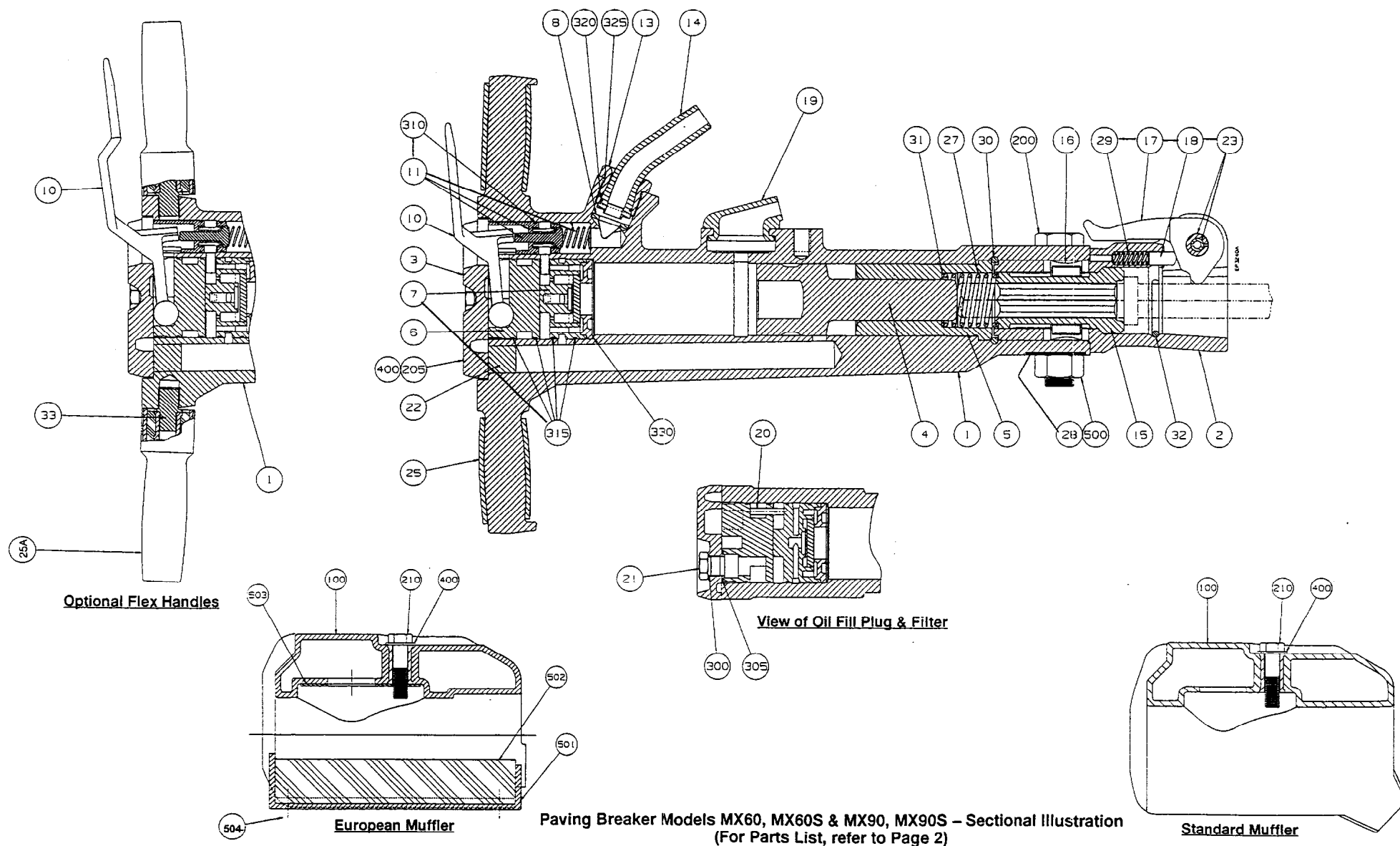
S

SAFETY, 1-1

PRECAUTIONS, 1-1



ILLUSTRATION "PROMAXX" PAVING BREAKER MODELS: MX60 & MX90





PARTS LIST

| Ref. No. | Name of Part | QTY | U.S. MUFFLER KIT # 52080298 FOR MX60 | | | | MUFFLED VERSION FOR EUROPE ONLY | | | | U.S. MUFFLER KIT #51953453 FOR MX90 | | | | MUFFLED VERSION FOR EUROPE ONLY | | | |
|----------|-------------------------------------|-----|--------------------------------------|------------------------|------------------------|-------------------------|---------------------------------|-------------------------|-------------------------|--------------------------|-------------------------------------|------------------------|------------------------|-------------------------|---------------------------------|-------------------------|-------------------------|--------------------------|
| | | | MX60-STD 51957181 | MX60-OPT-A 51957207 | MX60-STD-F 51957199 | MX60-OPT-AF 51957215 | MX60S-STD 51988822 | MX60S-OPT-A 51988830 | MX60S-STD-F 51988848 | MX60S-OPT-AF 51988855 | MX90-STD 51955110 | MX90-OPT-A 51955136 | MX90-STD-F 51955268 | MX90-OPT-AF 51955284 | MX90S-STD 51988632 | MX90S-OPT-A 51988640 | MX90S-STD-F 51988657 | MX90S-OPT-AF 51988665 |
| 1 | HOUSING | 1 | NSS | NSS | NSS | NSS | NSS | NSS | NSS | NSS | NSS | NSS | NSS | NSS | NSS | NSS | NSS | NSS |
| 2 | FRONTHEAD | 1 | 51917540 | X | X | X | X | X | X | X | X | X | X | X | X | X | X | X |
| 3 | BACKHEAD | 1 | 51943447 | X | X | X | X | X | X | X | X | X | X | X | X | X | X | X |
| 4 | PISTON | 1 | 51984615 | X | X | X | X | X | X | X | | | | | | | | |
| 4 | PISTON | 1 | 51999720 | X | X | X | X | X | X | X | | | | | | | | |
| 4 | PISTON | 1 | | | | | | | | | 51948368 | X | X | X | X | X | X | X |
| 5 | PISTON SEAT | 1 | 51949907 | X | X | X | X | X | X | X | | | | | | | | |
| 5 | PISTON SEAT | 1 | 51999738 | X | X | X | X | X | X | X | | | | | | | | |
| 5 | PISTON SEAT | 1 | | | | | | | | | 51943462 | X | X | X | X | X | X | X |
| 6 | HOUSING PLUG | 1 | 51949857 | X | X | X | X | X | X | X | X | X | X | X | X | X | X | X |
| 7 | VALVE CHEST KIT (MX60) | 1 | 52082682 | X | X | X | X | X | X | X | | | | | | | | |
| 7 | VALVE CHEST KIT (MX90) | 1 | | | | | | | | | 51955391 | X | X | X | X | X | X | X |
| 8 | AIR STRAINER | 1 | 51998357 | X | X | X | X | X | X | X | X | X | X | X | X | X | X | X |
| 10 | THROTTLE LEVER | 1 | 51943017 | X | 51955565 | X | 51943017 | X | 51955565 | X | 51943017 | X | 51955565 | X | 51943017 | X | 51955565 | X |
| 11 | THROTTLE VALVE KIT | 1 | 51955375 | X | X | X | X | X | X | X | X | X | X | X | X | X | X | X |
| 13 | AIR CONNECTION CAP | 1 | 51361798 | X | X | X | X | X | X | X | X | X | X | X | X | X | X | X |
| 14 | AIR CONNECTION NIPPLE | 1 | 51361863 | X | X | X | X | X | X | X | X | X | X | X | X | X | X | X |
| 15 | ANVIL BUSHING (1-1/4 IN. HEX) | 1 | 51943470 | | X | | X | | X | | X | X | X | X | X | X | X | X |
| 15 | ANVIL BUSHING (1-1/8 IN. HEX) | 1 | | 51948131 | | X | | X | | X | | X | X | X | X | X | X | X |
| 16 | ANVIL BUSHING RETAINER | 2 | 51944015 | X | X | X | X | X | X | X | X | X | X | X | X | X | X | X |
| 17 | LATCH KIT | 1 | 51955383 | X | X | X | X | X | X | X | X | X | X | X | X | X | X | X |
| 18 | PLUNGER | 1 | 51945079 | X | X | X | X | X | X | X | X | X | X | X | X | X | X | X |
| 19 | EXHAUST DEFLECTOR | 1 | 51729036 | X | X | X | X | | | | X | X | X | X | | | | |
| 20 | FILTER | 1 | 52089802 | X | X | X | X | X | X | X | X | X | X | X | X | X | X | X |
| 21 | OIL FILL PLUG | 1 | 51370203 | X | X | X | X | X | X | X | X | X | X | X | X | X | X | X |
| 22 | RUBBER PLUG (MX60) | 1 | 51983666 | X | X | X | X | X | X | X | | | | | | | | |
| 22 | RUBBER PLUG (MX90) | 1 | | | | | | | | | 51944007 | X | X | X | X | X | X | X |
| 23 | ROLL PIN KIT | 1 | 51792802 | X | X | X | X | X | X | X | X | X | X | X | X | X | X | X |
| 25 | HANDLE SLEEVE | 2 | 51952869 | X | | | X | X | | | X | X | | | X | X | | |
| 25 | FLEX HANDLE | 2 | | | 52084936 | X | | | X | X | | | X | X | | | X | X |
| 25A | FLEX HANDLE GRIP | 2 | | | 52084902 | X | | | X | X | | | X | X | | | X | X |
| 25B | WASHER | 1 | | | 51948016 | X | | | X | X | | | X | X | | | X | X |
| 25C | NUT | 1 | | | 95914404 | X | | | X | X | | | X | X | | | X | X |
| 25D | HANDLE | 1 | | | 52082658 | X | | | X | X | | | X | X | | | X | X |
| 25E | BUSHING | 1 | | | 52091105 | X | | | X | X | | | X | X | | | X | X |
| 25F | RETAINING RING | 1 | | | 95955829 | X | | | X | X | | | X | X | | | X | X |
| 27 | ANVIL BUSHING SPRING | 1 | 51952828 | X | X | X | X | X | X | X | X | X | X | X | X | X | X | X |
| 28 | FRONTHEAD WASHER | 1 | 51369171 | X | X | X | X | X | X | X | 51378438 | X | X | X | X | X | X | X |
| 28 | FRONTHEAD WASHER | 1 | 52080736 | X | X | X | X | X | X | X | | | | | | | X | X |
| 29 | PLUNGER SPRING | 1 | 51952836 | X | X | X | X | X | X | X | X | X | X | X | X | X | X | X |
| 30 | PISTON SEAT RETAINER | 1 | 51955862 | X | X | X | X | X | X | X | X | X | X | X | X | X | X | X |
| 31 | SPRING SEAT | 2 | 51956506 | X | X | X | X | X | X | X | X | X | X | X | X | X | X | X |
| 32 | ANVIL BUSHING RETAINER | 1 | 51954337 | X | X | X | X | X | X | X | X | X | X | X | X | X | X | X |
| 33 | FLEX HANDLE CONNECTOR | 2 | | | 51913440 | X | | | X | X | | | X | X | | | X | X |
| 100 | MUFFLER (FURNISHED W/BOLT & WASHER) | 1 | | | | | 52080298 | X | X | X | | | | | 51953453 | X | X | X |

PARTS LIST

| Ref. No. | Name of Part | QTY | U.S. MUFFLER KIT # 52080298 FOR MX60 | | | | MUFFLED VERSION FOR EUROPE ONLY | | | | U.S. MUFFLER KIT #51953453 FOR MX90 | | | | MUFFLED VERSION FOR EUROPE ONLY | | | |
|----------|--------------------------------|-----|--------------------------------------|------------------------|------------------------|-------------------------|---------------------------------|-------------------------|-------------------------|--------------------------|-------------------------------------|------------------------|------------------------|-------------------------|---------------------------------|-------------------------|-------------------------|-------------------------|
| | | | MX60-STD 51957181 | MX60-OPT-A 51957207 | MX60-STD-F 51957199 | MX60-OPT-AF 51957215 | MX60S-STD 51988822 | MX60S-OPT-A 51988830 | MX60S-STD-F 51988848 | MX60S-OPT-AF 51988855 | MX90-STD 51955110 | MX90-OPT-A 51955136 | MX90-STD-F 51955268 | MX90-OPT-AF 51955284 | MX90S-STD 51988632 | MX90S-OPT-A 51988640 | MX90S-STD-F 51988657 | MX90S-OPT-A 51988665 |
| 200 | FRONTHEAD BOLT (3/4) (MX60) | 1 | 95105573 | X | X | X | X | X | X | X | | | | | | | | |
| 200 | • FRONTHEAD BOLT (7/8) (MX60) | 1 | 95749537 | X | X | X | X | X | X | X | | | | | | | | |
| 200 | FRONTHEAD BOLT (1") (MX90) | 1 | | | | | | | | | 95379608 | X | X | X | X | X | X | X |
| 205 | BACKHEAD BOLT | 4 | 95054078 | X | X | X | X | X | X | X | X | X | X | X | X | X | X | X |
| 210 | MUFFLER BOLT | 1 | | | | | 95054144 | X | X | X | | | | | X | X | X | X |
| 300 | OIL FILL PLUG O-RING | 1 | 95209870 | X | X | X | X | X | X | X | X | X | X | X | X | X | X | X |
| 305 | BACKHEAD O-RING | 1 | 95018107 | X | X | X | X | X | X | X | X | X | X | X | X | X | X | X |
| 310 | THROTTLE BODY O-RING | 2 | 95097705 | X | X | X | X | X | X | X | X | X | X | X | X | X | X | X |
| 315 | VALVE CHEST O-RING | 2 | 03242559 | X | X | X | X | X | X | X | X | X | X | X | X | X | X | X |
| | HOUSING PLUG O-RING | 2 | 03242559 | X | X | X | X | X | X | X | X | X | X | X | X | X | X | X |
| 320 | CONNECTION NIPPLE O-RING | 1 | 95086161 | X | X | X | X | X | X | X | X | X | X | X | X | X | X | X |
| 325 | CONNECTION CAP O-RING | 1 | 95086112 | X | X | X | X | X | X | X | X | X | X | X | X | X | X | X |
| 330 | VALVE COVER O-RING | 1 | 95086583 | X | X | X | X | X | X | X | X | X | X | X | X | X | X | X |
| 400 | BACKHEAD WASHER | 4 | 51948016 | X | X | X | X | X | X | X | X | X | X | X | X | X | X | X |
| 400 | MUFFLER BOLT WASHER | 1 | | | | | 51948016 | X | X | X | | | | | X | X | X | X |
| 500 | FRONTHEAD NUT (MX90) | 1 | | | | | | | | | 95471165 | X | X | X | X | X | X | X |
| 500 | FRONTHEAD NUT (3/4) (MX60) | 1 | 95227112 | X | X | X | X | X | X | X | | | | | | | | |
| 500 | • FRONTHEAD NUT (7/8) (MX60) | 1 | 95477196 | X | X | X | X | X | X | X | | | | | | | | |
| 501 | MUFFLER BACK PLATE | 1 | | | | | 52082450 | X | X | X | | | | | | | | |
| 502 | MUFFLER FOAM | 1 | | | | | 52083888 | X | X | X | | | | | | | | |
| 503 | GASKET | 1 | | | | | 52083045 | X | X | X | | | | | | | | |
| 504 | MUFFLER SCREW 1/4X1-1/4 (MX60) | 4 | | | | | 52084621 | X | X | X | | | | | | | | |
| | | | | | | | | | | | | | | | | | | |
| | | | | | | | | | | | | | | | | | | |
| | | | | | | | | | | | | | | | | | | |
| | | | | | | | | | | | | | | | | | | |

LUBRICATION (Furnished Only When Specially Ordered)

51378701 . ROCK DRILL OIL ... (LIGHT) ... 1 GAL
 51378727 . ROCK DRILL OIL ... (LIGHT) ... 5 GAL
 51378743 . ROCK DRILL OIL ... (LIGHT) ... 55 GAL

• NOTE: These parts are used on tools with batch/lot number RVL 1501 and above
 Parts List for MX60, MX60S, MX90, MX90S
 (For Sectional Illustration Refer to Pages 1 and 2)

AVAILABLE KITS

52082682 VALVE CHEST KIT 1 .. 51955383 LATCH KIT
 51955391 VALVE CHEST KIT 1 .. 51792802 ROLL PIN KIT
 51955375 THROTTLE VALVE KIT 1